

Hammer mills

High-performance grinding



High-performance grinding

For many applications



▲ Hammer mill



Hammer mills for many applications

The quality and know-how inherent in hammer mills are backed by over a century of experience in the feed milling and other related industries around the world. The requirements for grinding a large number of special products have led to the development of hammer mills that can be adapted to almost any application, regardless of whether coarse or fine grinding is required, e.g. raw materials for the production of animal feed, fish feed, pet food, and biomass products, such as wood flakes, straw, and other surplus materials.

A complete solution

The correct combination of hammer mill type, screens, hammers, speed, feeding system, and air suction through the hammer mill ensures the required grinding re-

sults and creates optimum conditions for subsequent processes, such as mixing, pelleting, and extrusion.

Thus, the grinding process is not merely a question of the hammer mill alone, but also includes everything from feed system to discharge hopper, aspiration filter, and electronic control system.





Optimill coarse grinders for cattle, pig, and poultry feed



Optimill coarse grinders



▲ Optimill, type 500/700/900



▲ Optimill, type 1201

Optimill series

The Optimill series consists of hammer mills for raw material grinding of normal to coarse-structured feed products, such as cattle, pig

and poultry feeds. The Optimill series has grinding chamber diameters of 1,100 mm and widths from 500 mm to 1,200 mm. The operating speed is 1,500/1,800 rpm.

- Coarse-grained particles
- High capacity
- Low energy consumption
- Reduced noise level
- The patented, closed rotor design can save up to 20% in energy consumption compared to traditional rotor designs
- Feed system for uniform screen load

Optimill, type 500/700/900
Screen frames are mounted inside large sliding access doors. The mill rotor is stopped during screen change.

Optimill features

- Large screen area
- Optimum particle size range



Low consumption – high performance

The closed, aerodynamic rotor design directs the material straight out towards the screen, where highly effective, low-energy grinding takes place.

Optimill, type 1201
Four screen sections for minimization of screen costs, particle size flexibility, and ease changing.

Multimill and 4360 fine grinders for aqua feed and pet food

Multimill and 4360 fine grinders



▲ Multimill, type 1000 B



▲ Multimill, type 1400 C



▲ Type 4360

Multimill series

The Multimill series consists of fine-grinding hammer mills for high-capacity production of fish feed, pet food, and other fine-ground materials. The Multimill series has grinding chamber diameters of 650 mm and widths from 450 mm to 1,400 mm. The operating speed is 3,000/3,600 rpm.

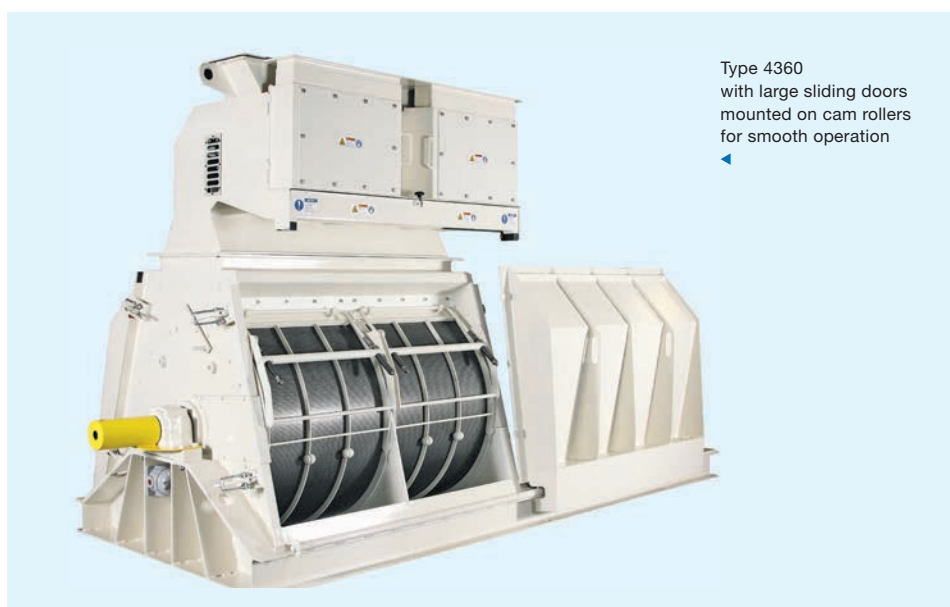
Multimill features

- High-capacity particle size reduction
- Superior feed quality
- Protection of nutritive value of feed ingredients through low temperature operation
- Energy-saving, closed rotor design

Multimill, type 1000 B
Screen change through front doors.

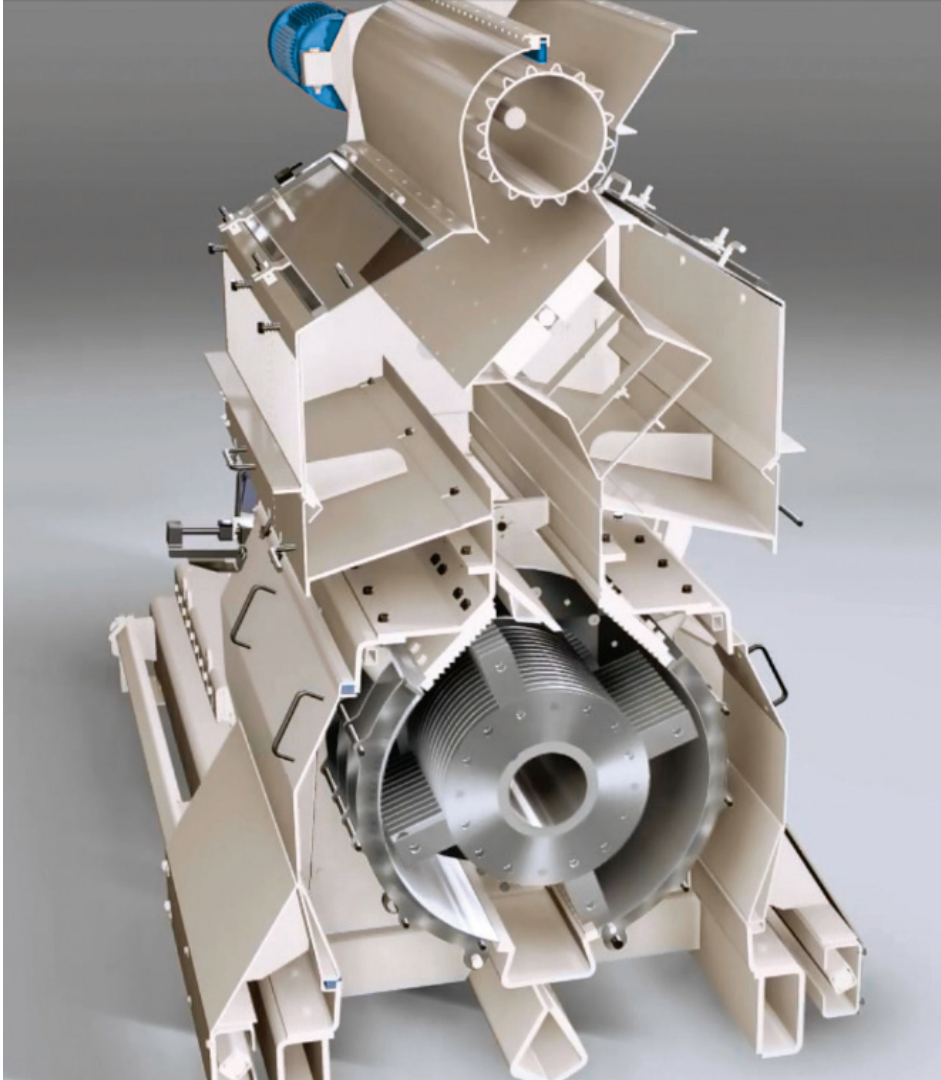


Technical data				
Hammer mill	Motor power	Rotor rpm	Screen area	Filter air
Type Multimill	kW	50/60 Hz	dm ²	m ³ /h
650/630	75-110	3000/3600	83	4000
650/800	90-160	3000/3600	106	5000
650/1000 B	160-250	3000/3600	146	6300
650/1400 C	200-355	3000/3600	186	9000
Type Optimill				
500	160	1500/1800	143	3600
700	250	1500/1800	200	5000
900	315	1500/1800	257	6400
1201	355	1500/1800	346	8800
Type 4360				
4360	450	1500/1800	468	16500

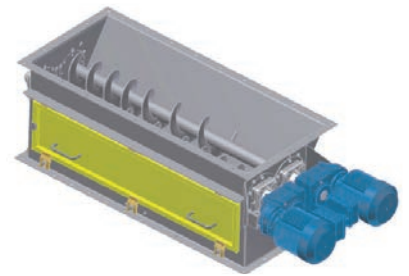


Type 4360 with large sliding doors mounted on cam rollers for smooth operation

Grinding technique for high controllability



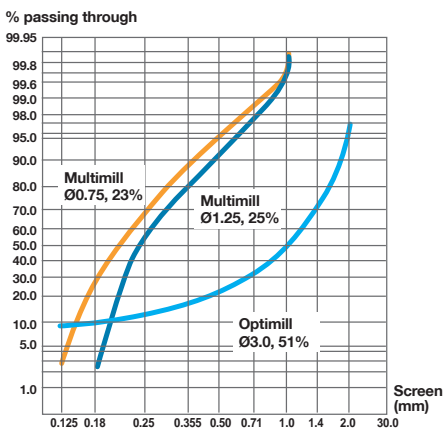
Feeding devices



▲ Distributor screw



▲ Pocket feeder



Design and function

The hammer mills are fed radially for dual-rotational operation to achieve uniform wear and full utilization of screens and hammers. Models with tangential inlets are available for low-density products. The hammer mills have a directly coupled motor mounted on a base frame. The front doors are bottom-hinged and open on sliding rails. All operating points have electronic safety equipment. The hammer mills are supplied with a separator and a magnet above the inlet to protect the grinding chamber against damage and spark risks from foreign objects in the material flow.

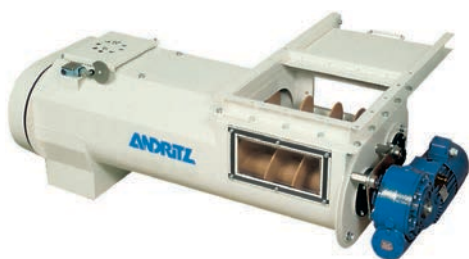
Feeding system for uniform load

By feeding the material over the full length of the grinding chamber, the particle size can be controlled accurately and the hammers and screens have uniform loading, resulting in longer lifetime of wear parts and higher output per kilowatt.

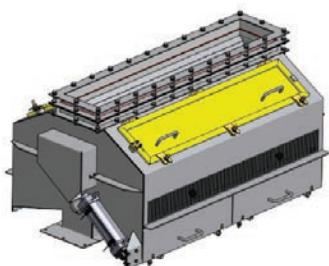
The feed system, which is available as double screw and separator or as pocket feeder with integrated separator and distribution roll, can be adjusted to suit all raw material types.

Grinding units for stand alone applications

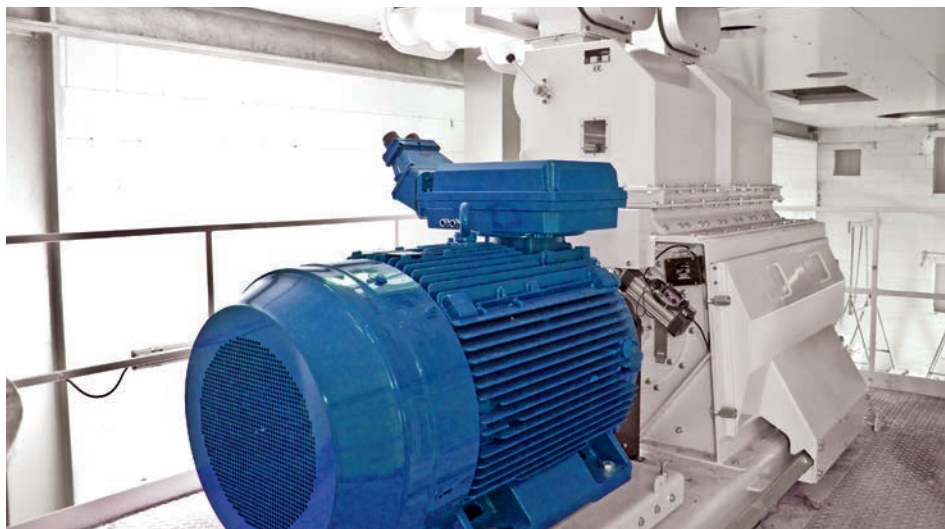
Feeding devices



▲ Screw feeder



▲ Separator



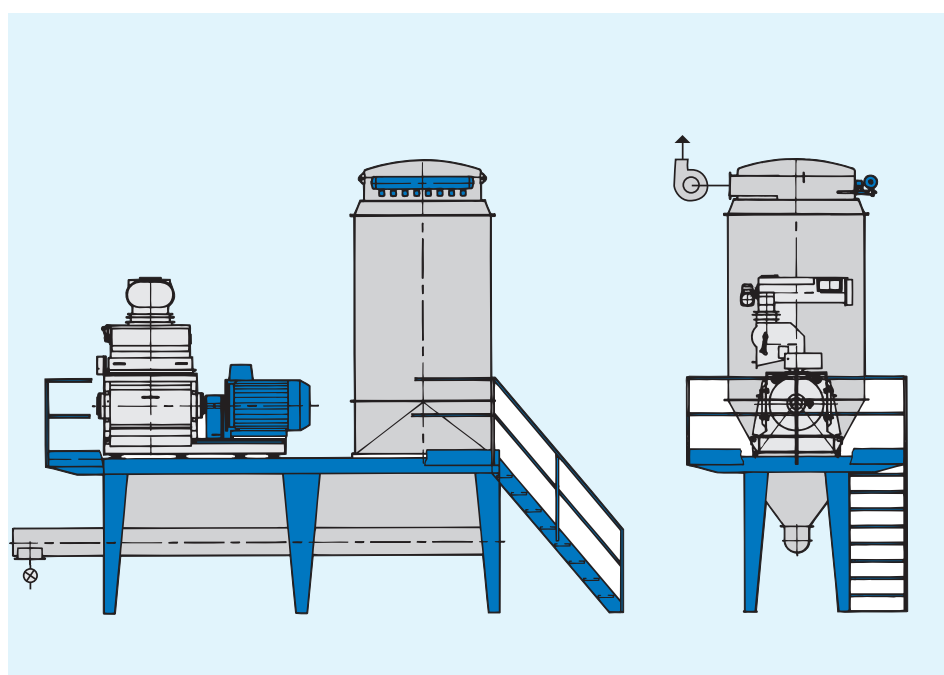
The ANDRITZ product range includes every key processing machine in the feed production line, including weighing machine, mixer, feed expander, pellet mill, extruder, dryer, cooler, coating systems, dosing device for micro-liquids, crumbler, filter, and control systems.

ANDRITZ grinding units

- Feeder
- Distributer screw
- Separator
- Hammer mill
- Collection bin
- Air lock
- Aspiration filter
- Fan
- Operating platform
- Pre bin

Hammer mill control

The entire grinding process is controlled by an AFB-HM1 or HMCPS control unit in a cabinet with front operating panel, providing a full view of all operational functions. The efficient feeding system control optimizes product change and mill capacity utilization.



Where to find us

Global supplier – local presence

ANDRITZ is truly a global organization – but also with local presence. We are represented all over the world. The global market for feed technologies is served from five main locations:

- Esbjerg, Denmark
- Sanshui, Guangdong Province, China
- Geldrop, Netherlands
- Muncy, PA, USA
- Humenné, Slovakia

In addition, we operate from several strategic regional sales, engineering, and service locations in China, Vietnam, India, Australia, Mexico, Venezuela, Brazil, Chile, France, the UK, and Germany – and are also represented locally by agents and distributors in many other markets.



CONTACT

AUSTRALIA

ANDRITZ Feed & Biofuel Australia
Division of ANDRITZ Pty. Ltd.
 Phone: +61 3 8795 9800
 andritz-fb.au@andritz.com

GERMANY

ANDRITZ Feed & Biofuel Germany
Division of ANDRITZ GmbH
 Phone: +49 2104 9197 0
 andritz-fb.de@andritz.com

USA

ANDRITZ Feed & Biofuel USA
Division of ANDRITZ Inc.
 Phone: +1 570 546 1253
 andritz-fb.us@andritz.com

BRAZIL

ANDRITZ Feed & Biofuel Brasil Ltda.
 Phone: +55 51 3333 0128
 andritz-fb.br@andritz.com

INDIA

ANDRITZ Feed & Biofuel India
Rep. Office of ANDRITZ Feed & Biofuel A/S
 Phone: + 91 87544 15287
 andritz-fb.india@andritz.com

VENEZUELA

ANDRITZ Feed & Biofuel Venezuela
Rep. office of ANDRITZ Feed & Biofuel A/S
 Phone: +58 241 8422515
 andritz-fb.ve@andritz.com

CHILE

ANDRITZ Feed & Biofuel Chile Ltd.
 Phone: +56 2214 5711
 andritz-fb.cl@andritz.com

MEXICO

ANDRITZ Feed & Biofuel Mexico
Division of ANDRITZ HYDRO S.A. de C.V.
 Phone: +52 229 178 3669
 andritz-fb.mx@andritz.com

VIETNAM

ANDRITZ Feed & Biofuel Vietnam
Rep. office of ANDRITZ Feed & Biofuel A/S
 Phone: +84 8 6253 9434
 andritz-fb.vi@andritz.com

CHINA

ANDRITZ Feed & Biofuel China
 Phone: +86 21 64670285
 andritz-fb.cn@andritz.com

NETHERLANDS

ANDRITZ Feed & Biofuel B.V.
 Phone: +31 40 2627777
 andritz-fb.nl@andritz.com

FRANCE

ANDRITZ Feed & Biofuel France
Division of ANDRITZ S.A.S.
 Phone: +33 24 75 06 364
 andritz-fb.fr@andritz.com

UK

ANDRITZ Feed & Biofuel Ltd.
 Phone: +44 1482 825119
 andritz-fb.uk@andritz.com

ANDRITZ Feed & Biofuel A/S
 Glentevej 5–7
 6705 Esbjerg, Denmark
 Phone: +45 72 160 300
 andritz-fb.dk@andritz.com
www.andritz.com/ft